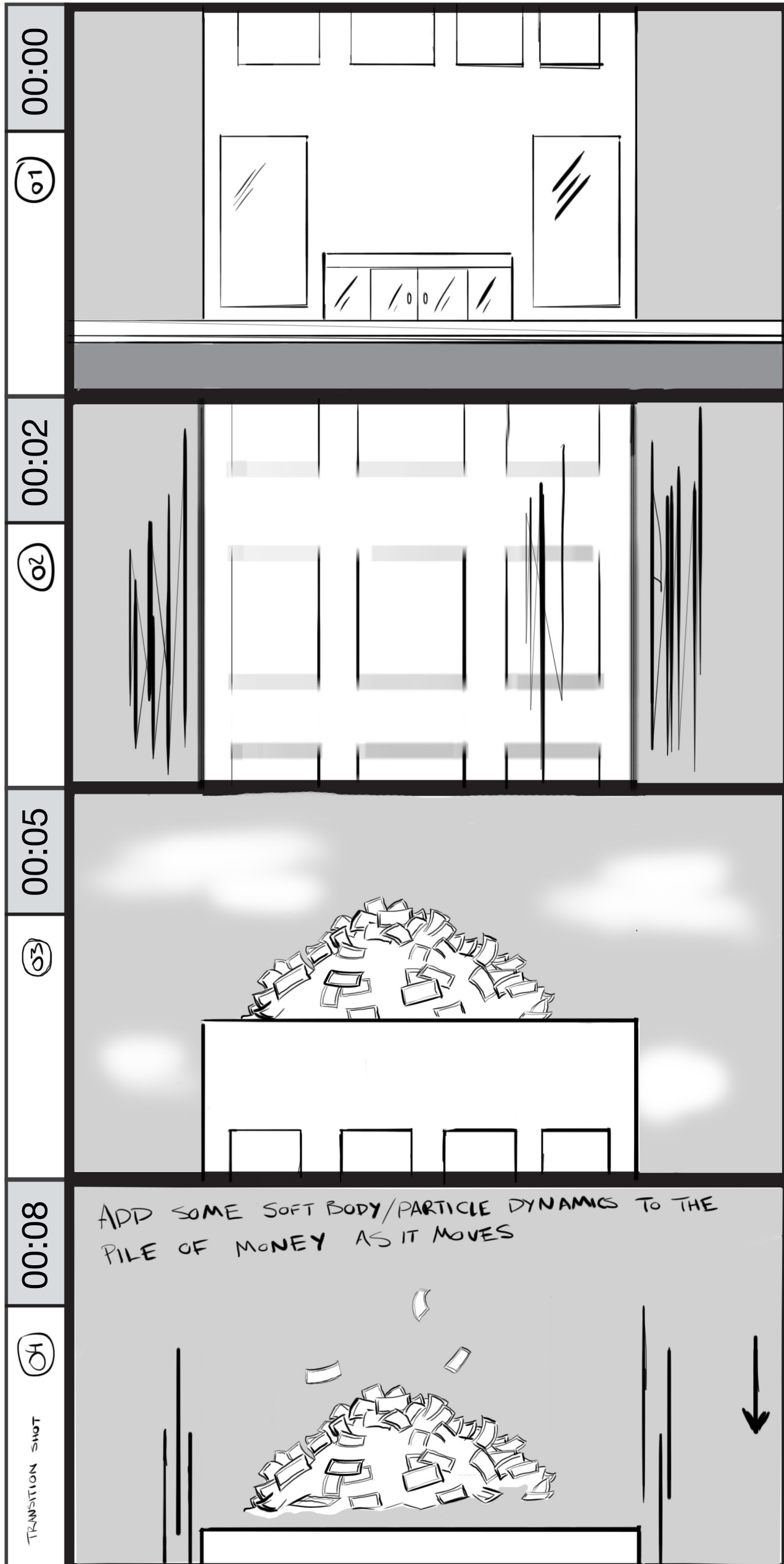


PhishMe, Inc.

Title: Business Email Compromise (BEC)		Written By: Beth Burghardt
Director: Jeff Orloff	Storyboard: Joshua Rapp	Date: July 2016



NARRATOR:

By posing as high level executives...

Day. Office building exterior. Ground floor.

NARRATOR:

attackers have stolen millions of dollars

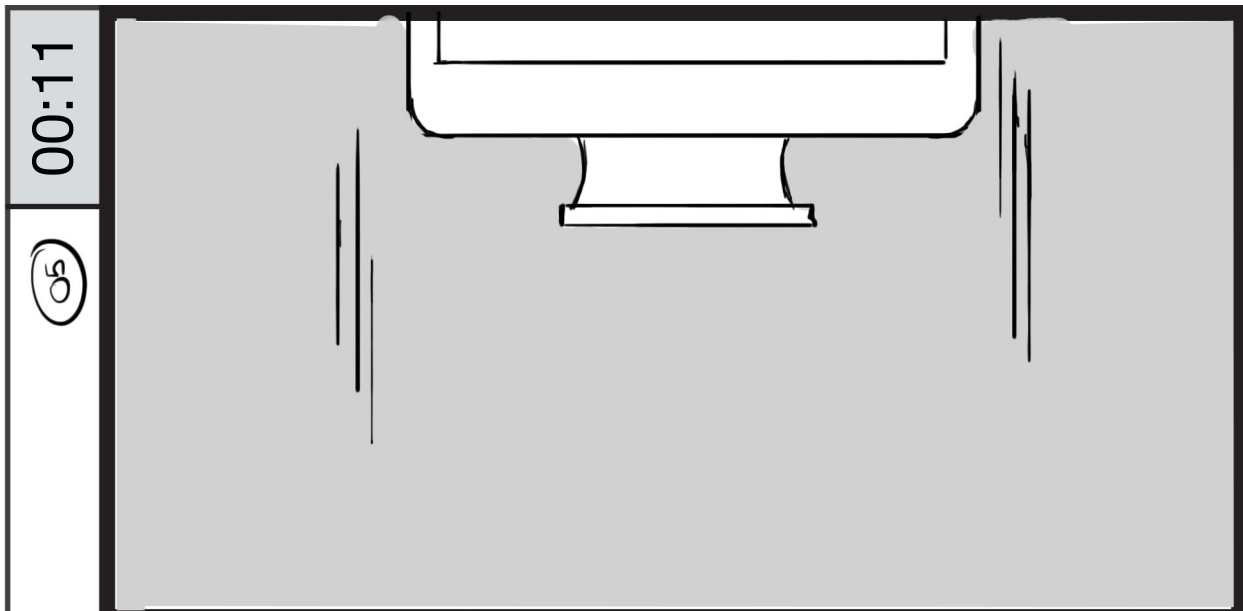
The camera begins to pan up scaling the height of the building.

NARRATOR:

through Business Email Compromise schemes.

The camera stops at the top of the building displaying a large amount of money.

The clouds disappear. The camera pans upward as the building and money move down out of the shot.



The camera pans up revealing an empty screen monitor.



NARRATOR:
BEC emails trick targets into initiating wire transfers,

The monitor lands in the middle of the shot. An email appears on screen.

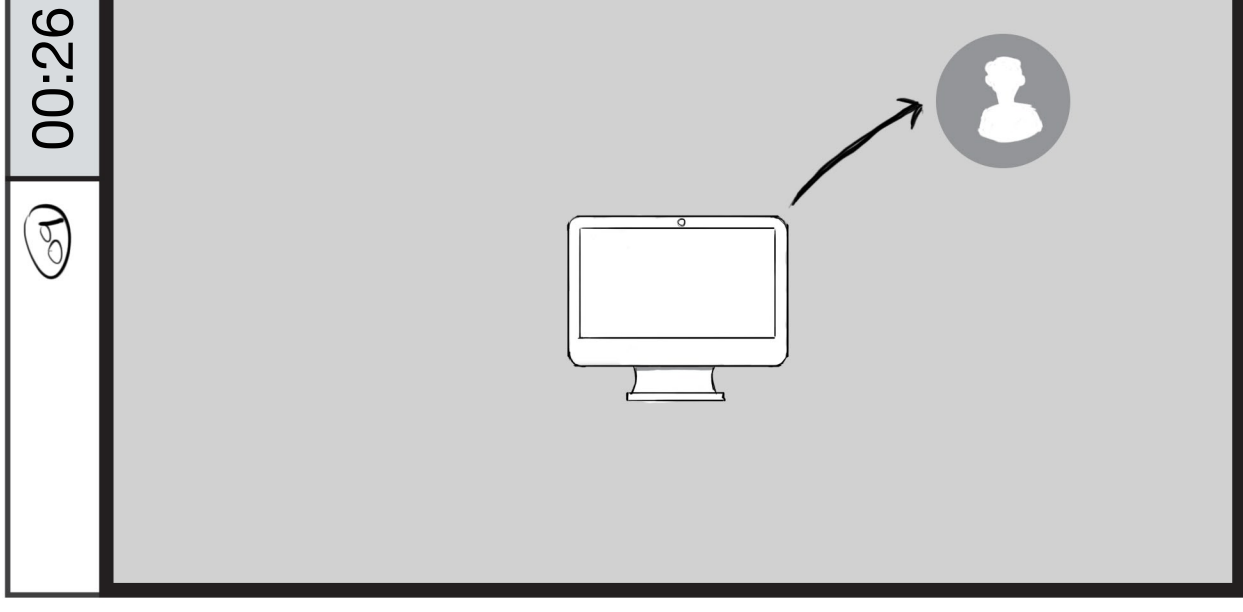


NARRATOR:
often by impersonating an executive, a vendor, or a supplier.



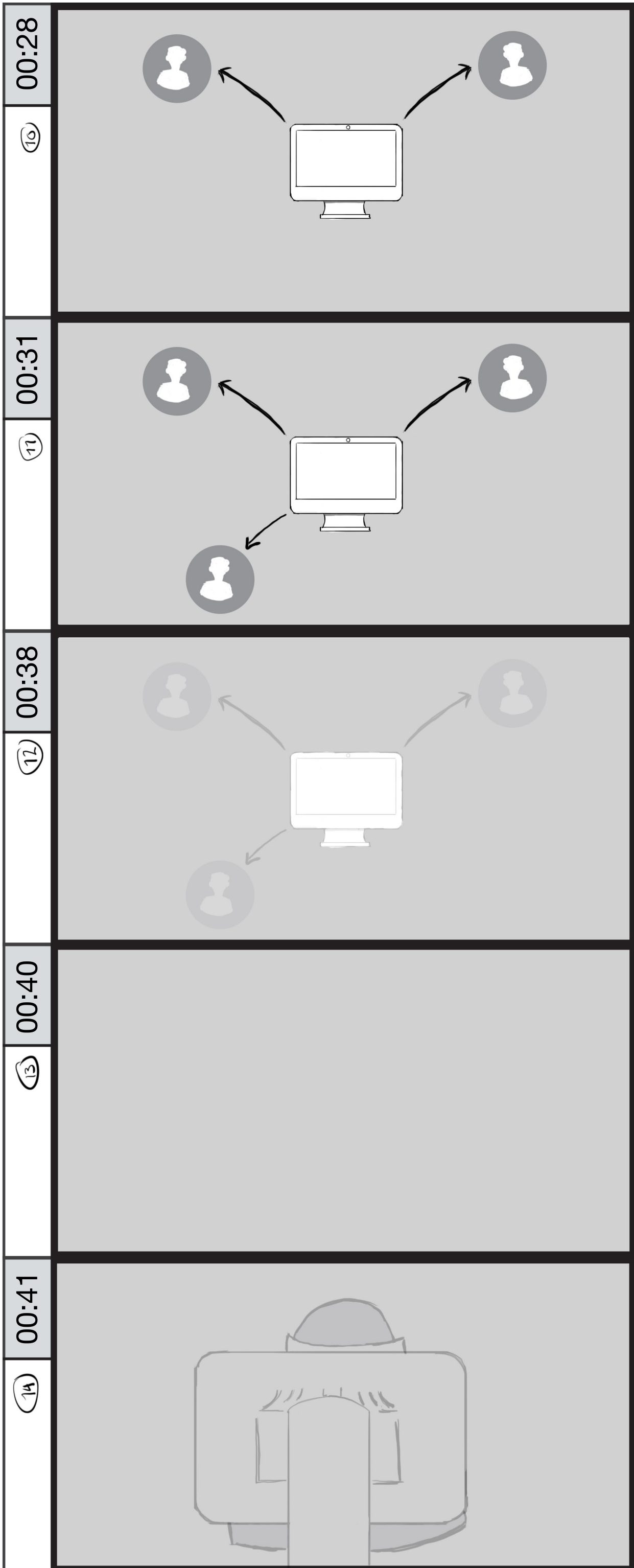
NARRATOR:
BEC emails are sent to only a few employees...

The camera begins to zoom out.



NARRATOR:
like financial officers and accountants

An arrow animates from the top right corner of the monitor, pointing to a user avatar.



NARRATOR:

who are authorized to initiate a wire transfer.

Another arrow animates from the top left corner pointing to another similar user avatar.

NARRATOR:

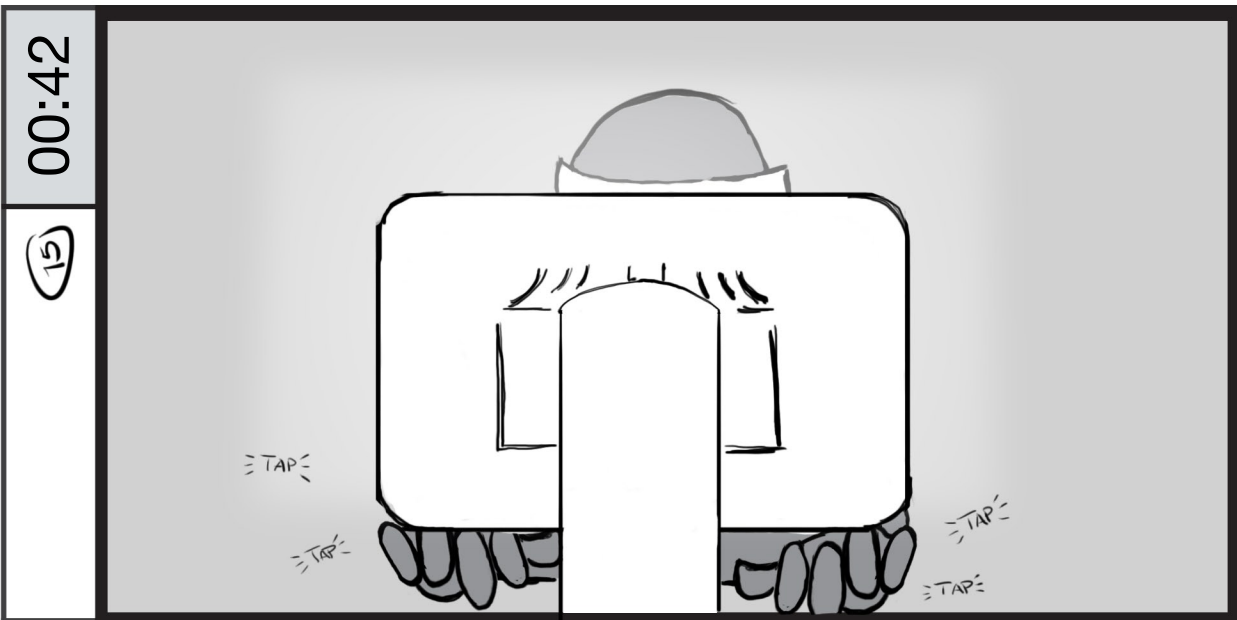
The attacker first engages in conversation to gain the target's trust, so these emails rarely include...

Another arrow animates from the bottom left corner pointing to another similar user avatar.

NARRATOR:

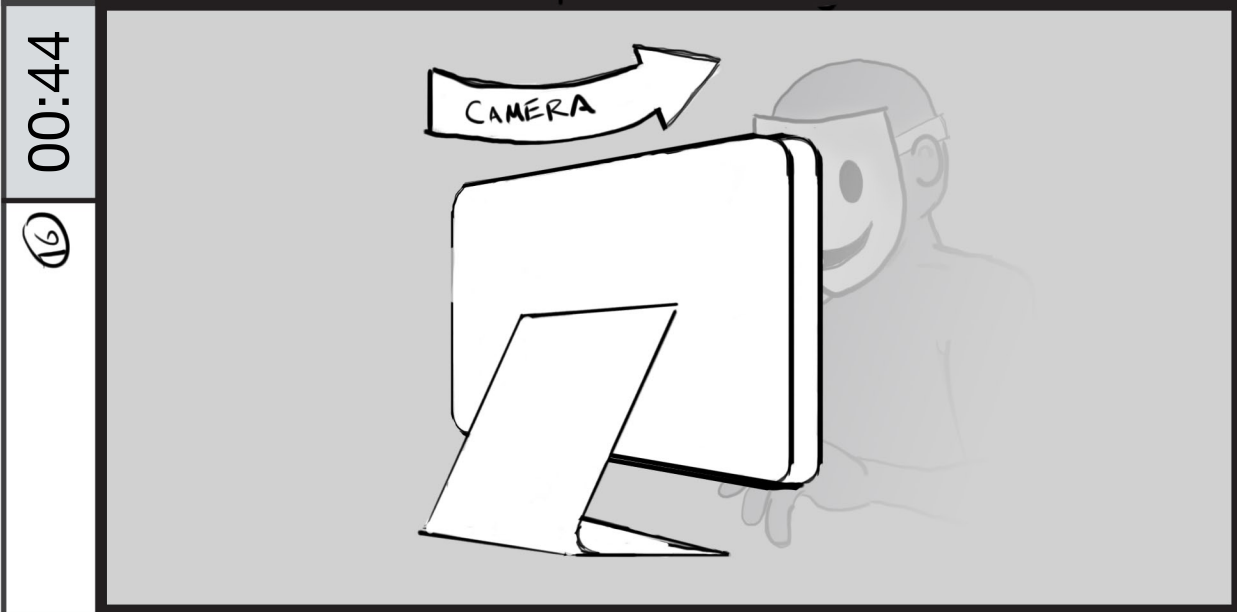
...links or attachments.

The elements in the shot fade away.



NARRATOR:
BEC phishers conduct...

The attacker fades in typing behind the computer monitor.



NARRATOR:
research to make their email more believable.

The attacker fades out of the shot before the camera pans around the monitor.



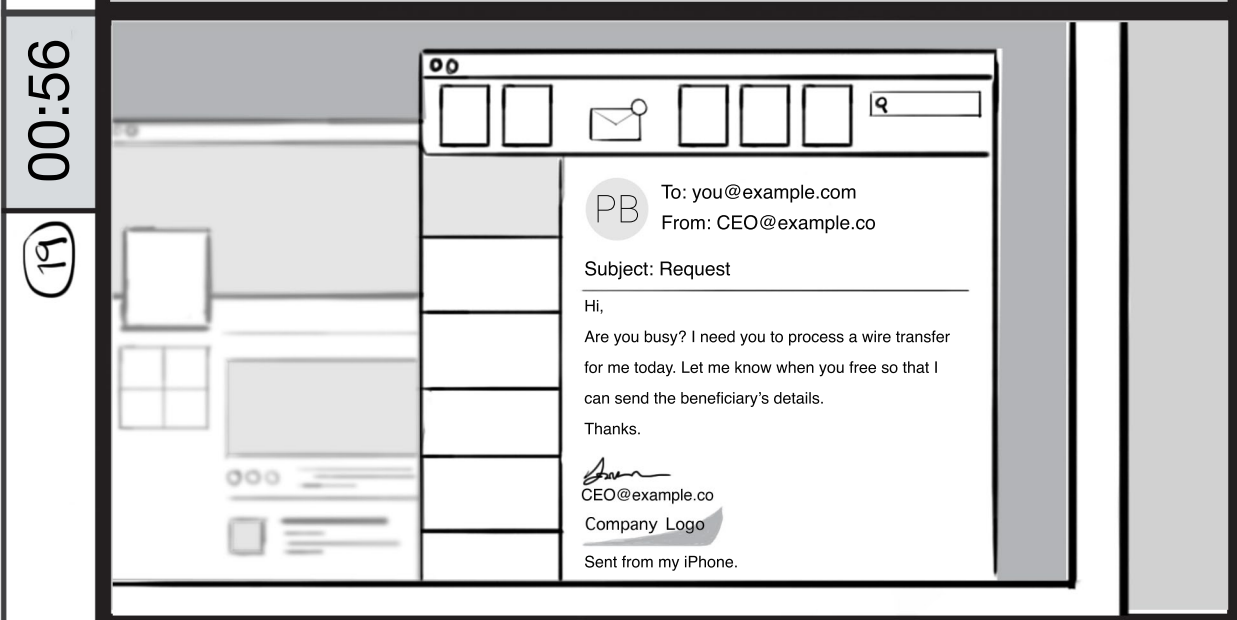
NARRATOR:
Then, they wait for the perfect opportunity, like a change in leadership or a CEO traveling overseas.

An email client is over a social media account. The email client has a new message.



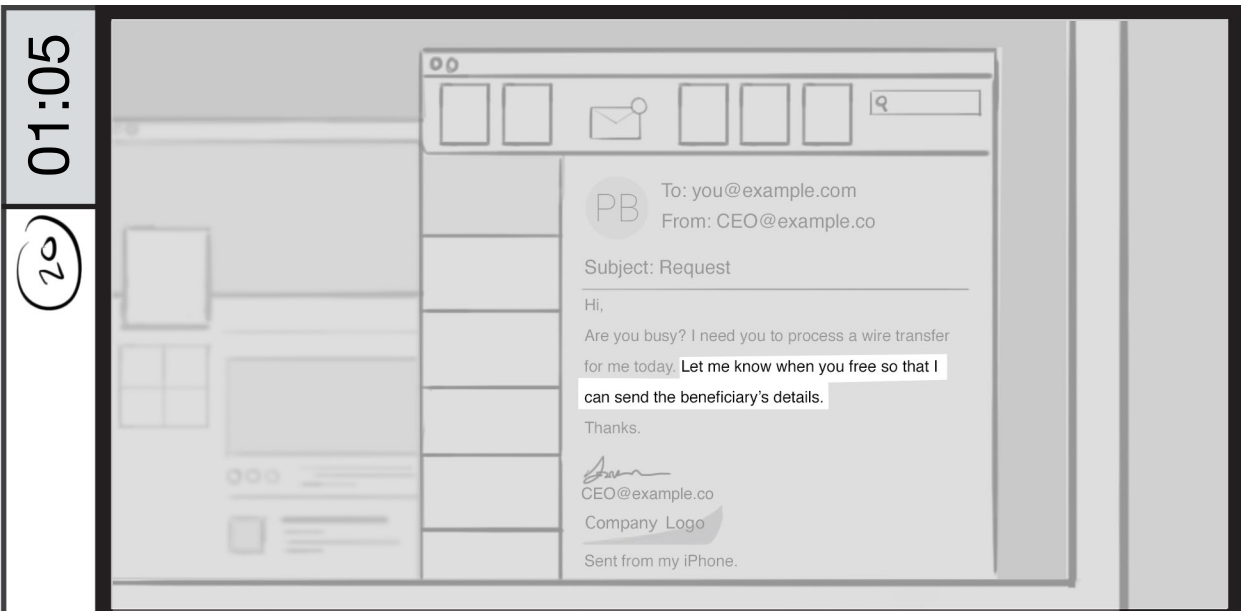
NARRATOR:
BEC emails often use spoofed

The camera zooms into the screen placing focus on the email client.

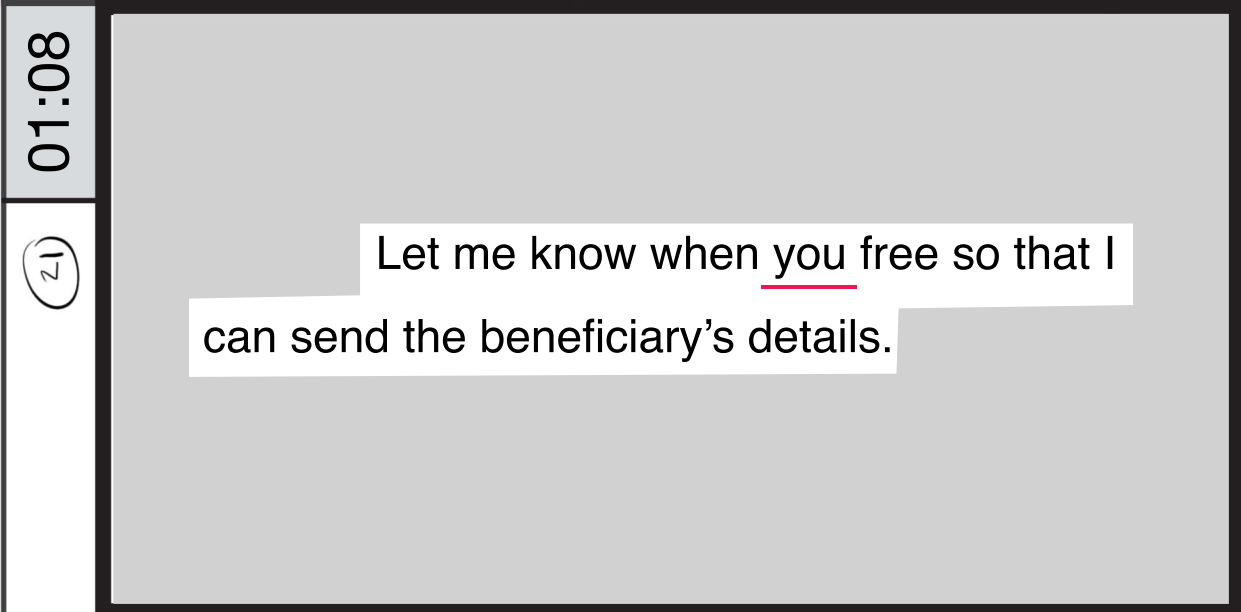


NARRATOR:
email addresses, authentic signatures, and logos to look more credible. Even if an email looks legitimate, you should still use caution.

The site in the background uses depth of field to place more focus on the foreground.

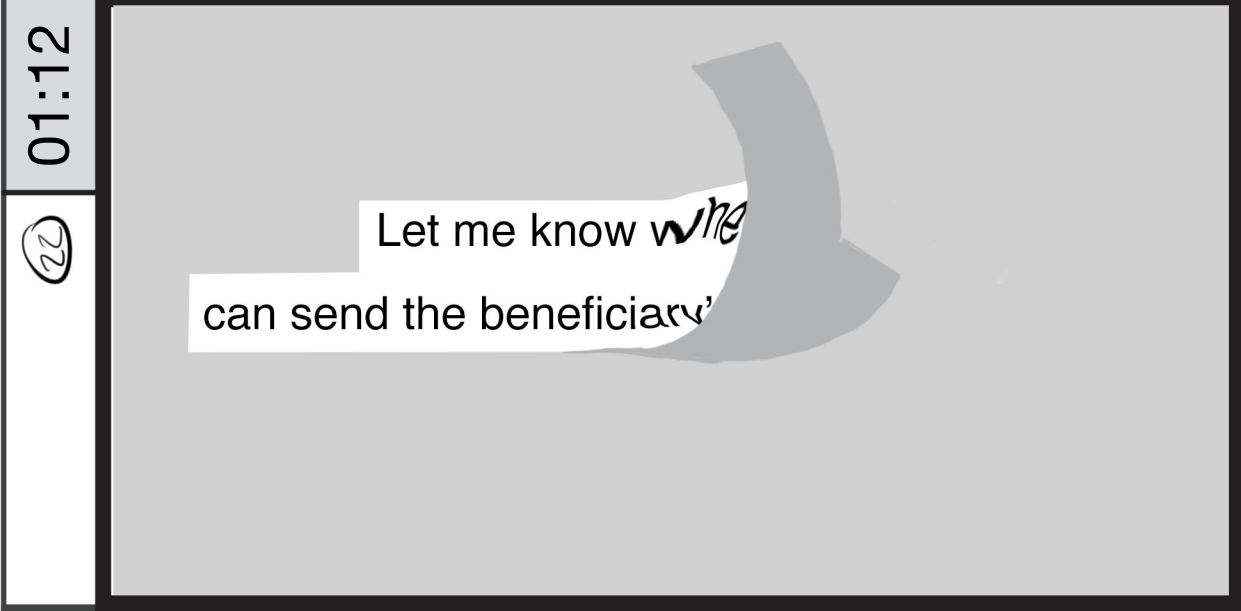


A sentence is highlighted by fading the rest of the elements out of the shot.

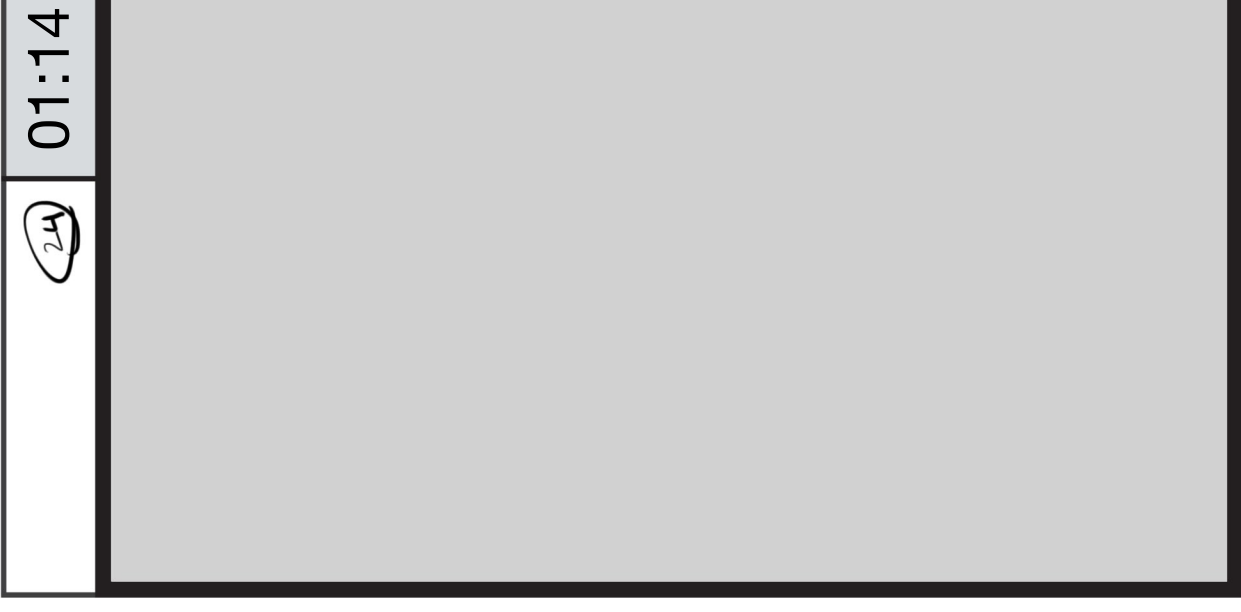
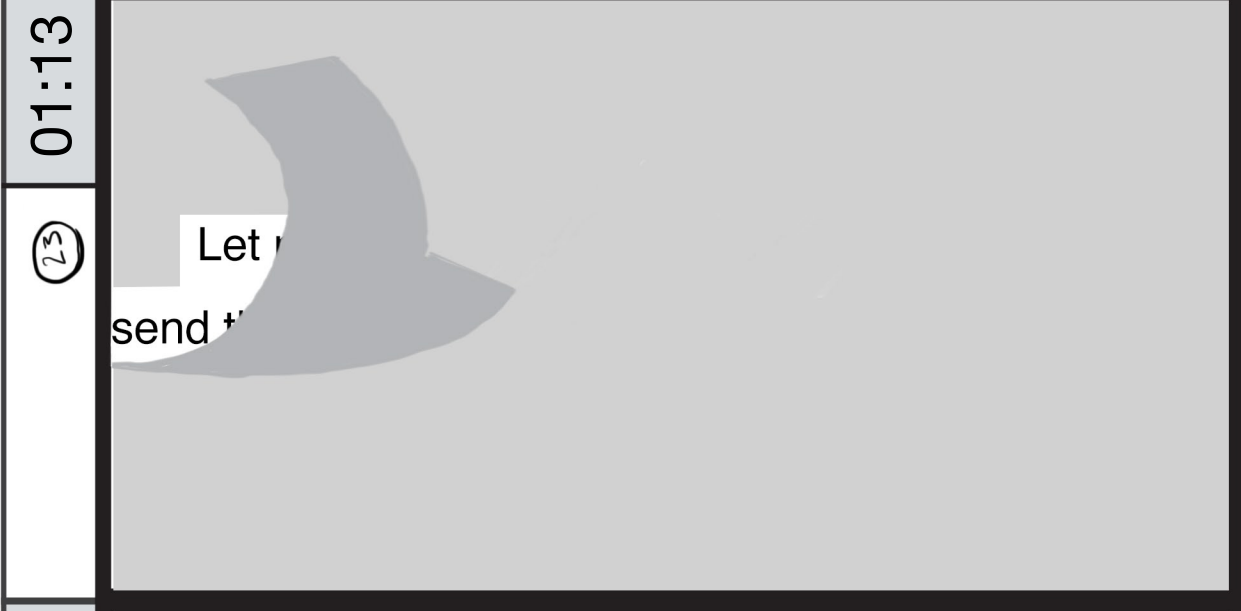







NARRATOR:
Look for unusual grammar, spelling, or punctuation errors.

The grammar mistake in the sentence is underlined in red.



The highlighted piece tears away to the left like a piece of paper.

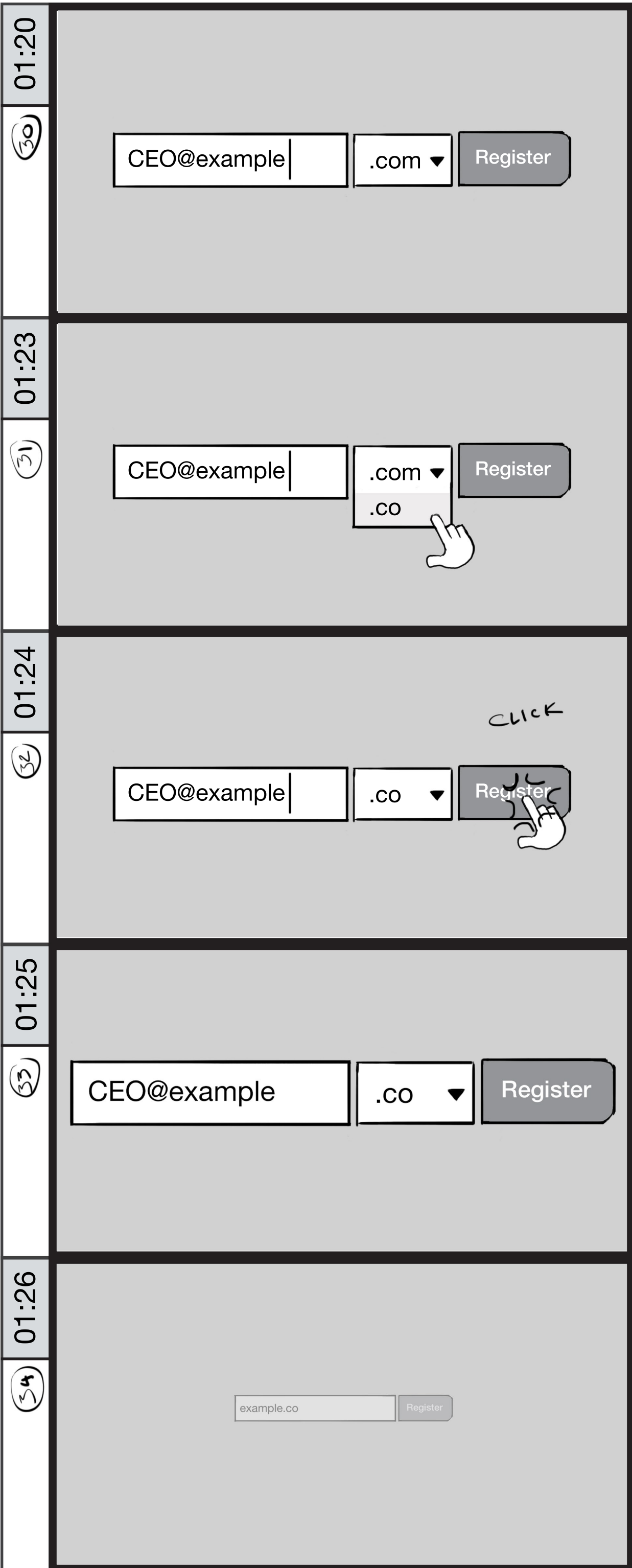


01:15	(25)	
01:16	(26)	
01:17	(27)	
01:18	(28)	
01:19	(29)	

NARRATOR:
Watch out for copycat domains.

A text input fades into the shot.

The cursor deletes back to the "p" in the domain name.



NARRATOR:

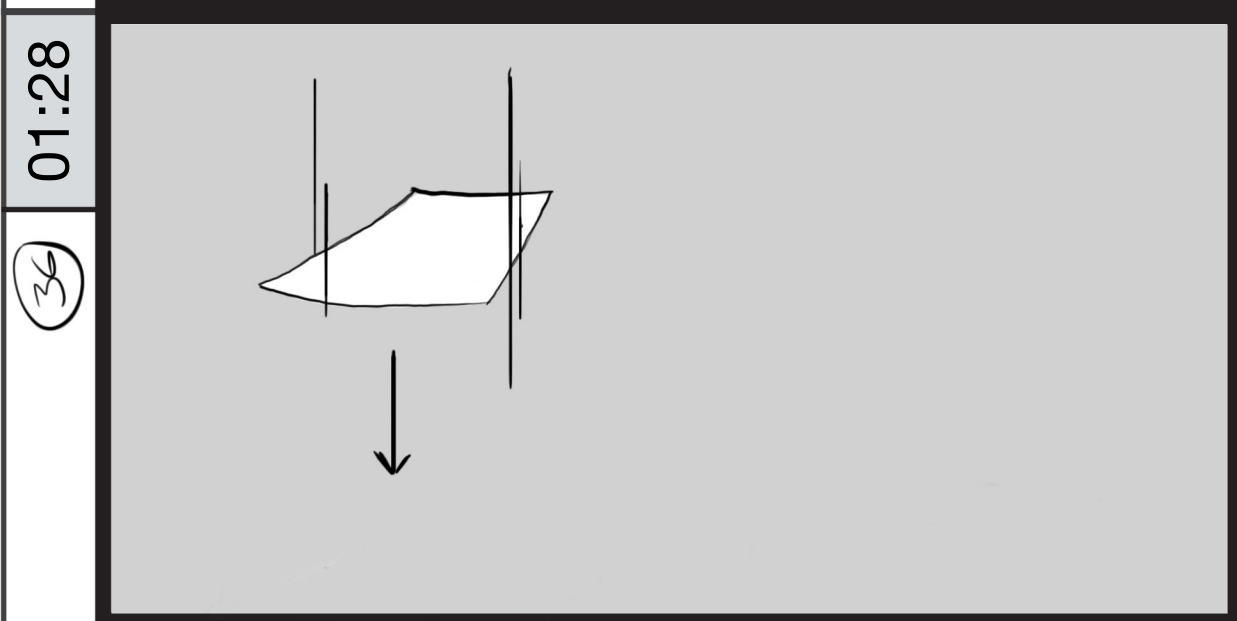
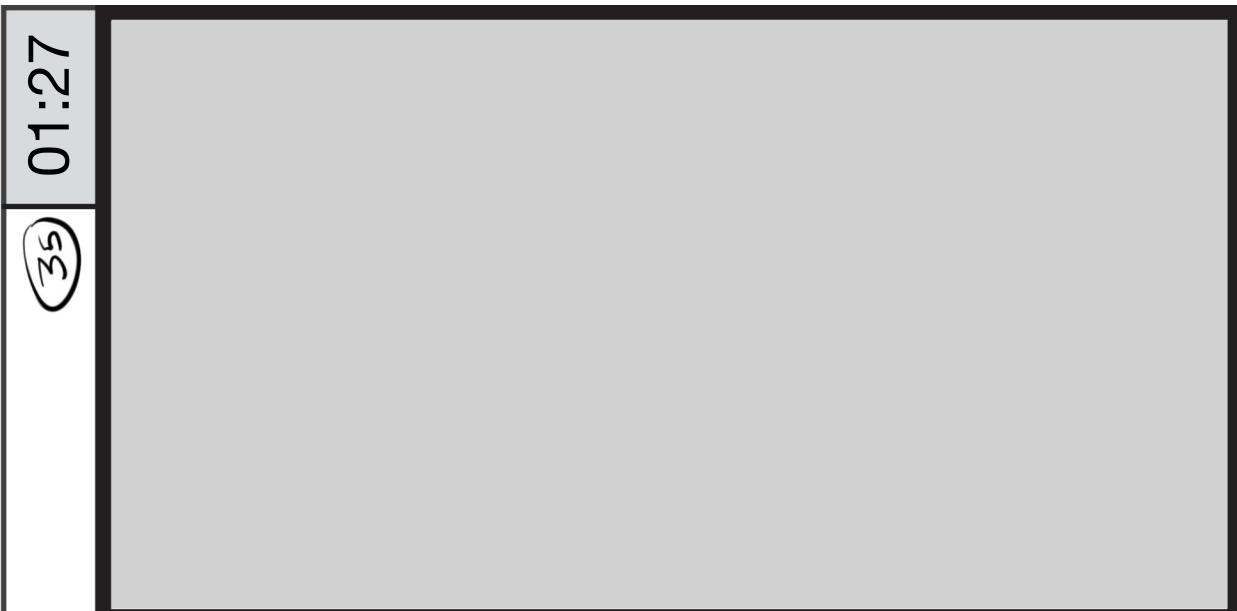
Remember, email addresses can be spoofed.

The user types in the domain shown in this panel.

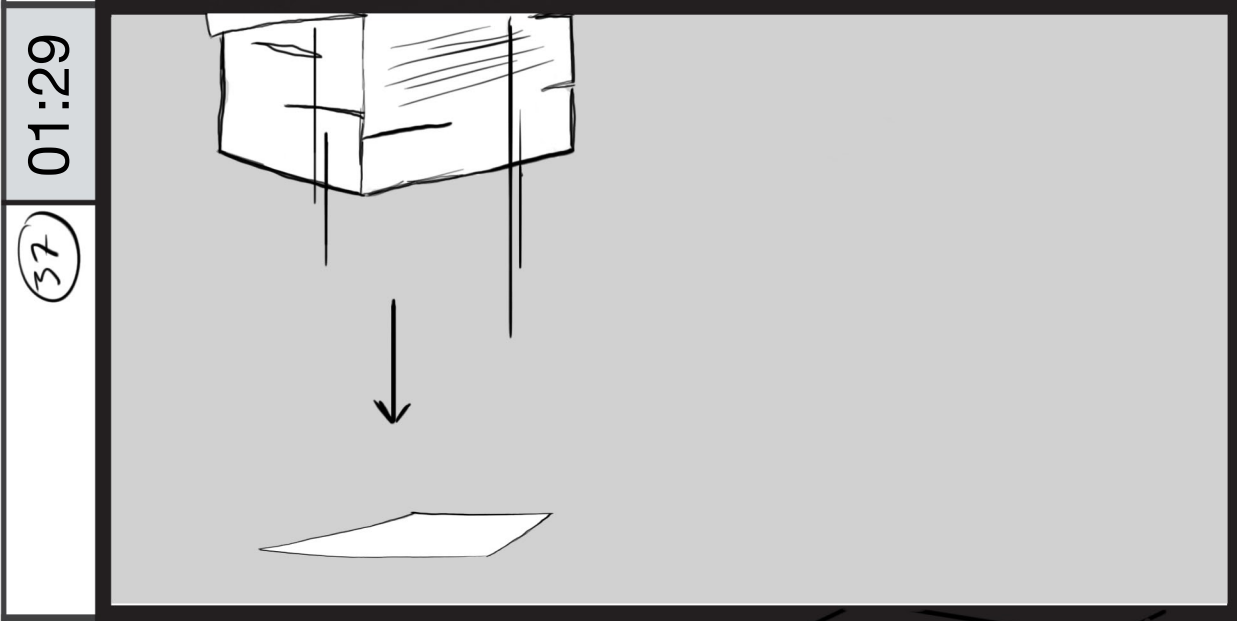
A pointer cursor appears from the right bottom of the shot and moves toward the "register" button.

The entire input and button element elastically enlarges to scale down and fade out.

Like an elastic bounce on a Z axis.

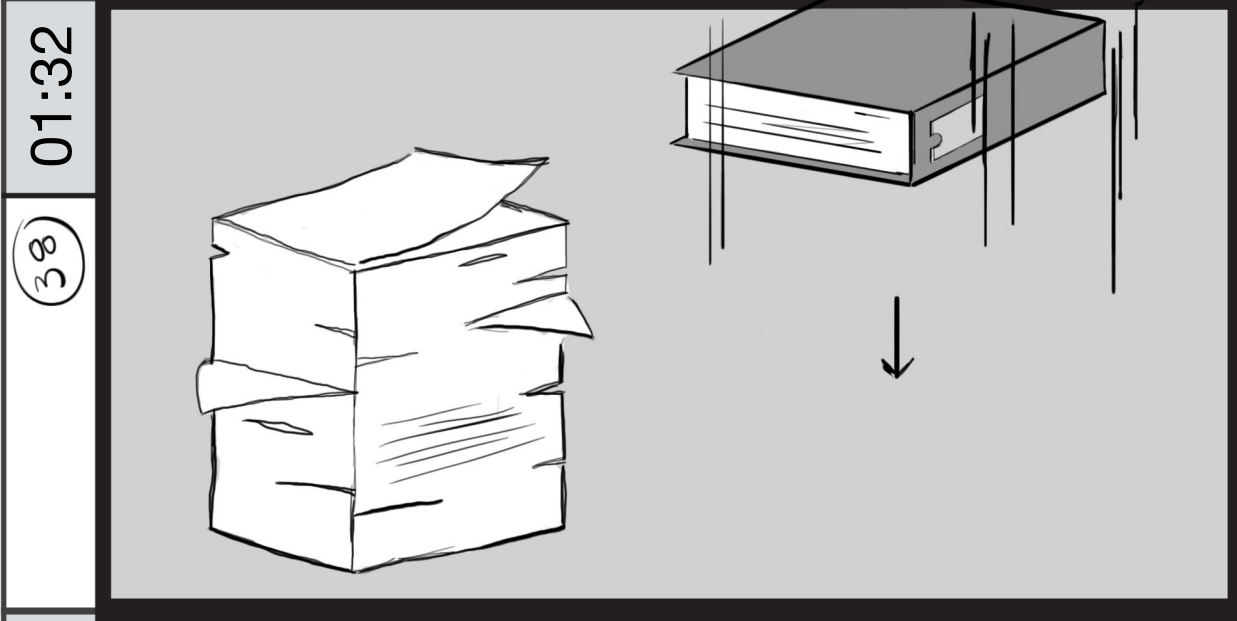


Single piece of paper falls down from the top of the shot.



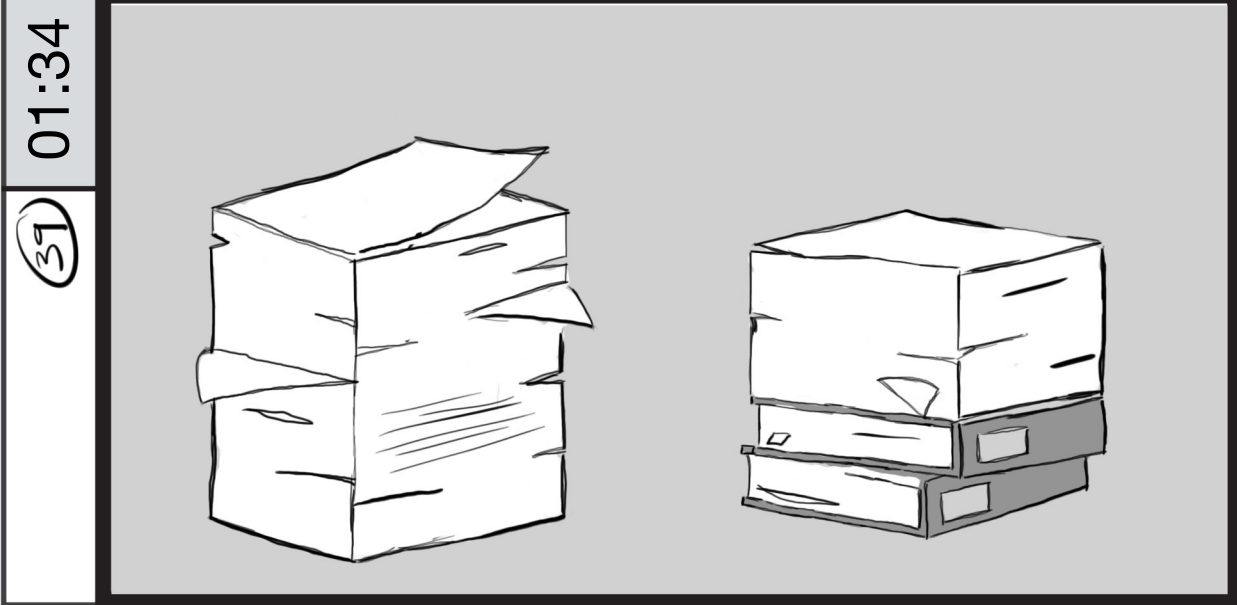
NARRATOR:
Be skeptical of urgent requests...

A stack of papers quickly follows the previous sheet down.



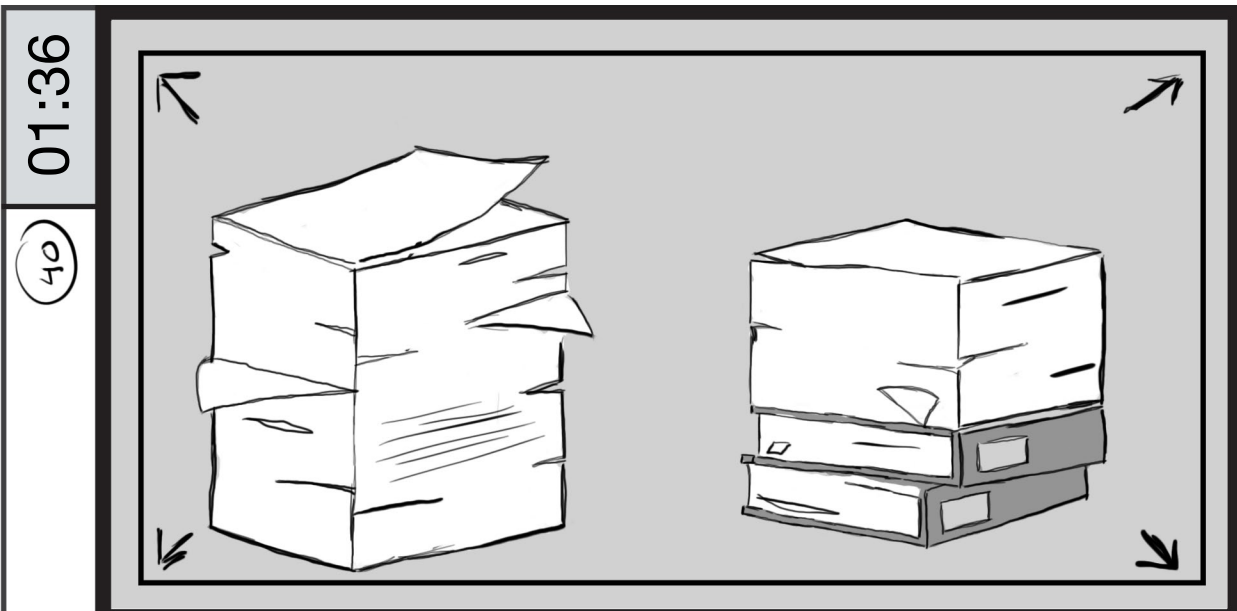
NARRATOR:
that don't follow typical company policies...

A notebook falls down from the right starting a second stack.

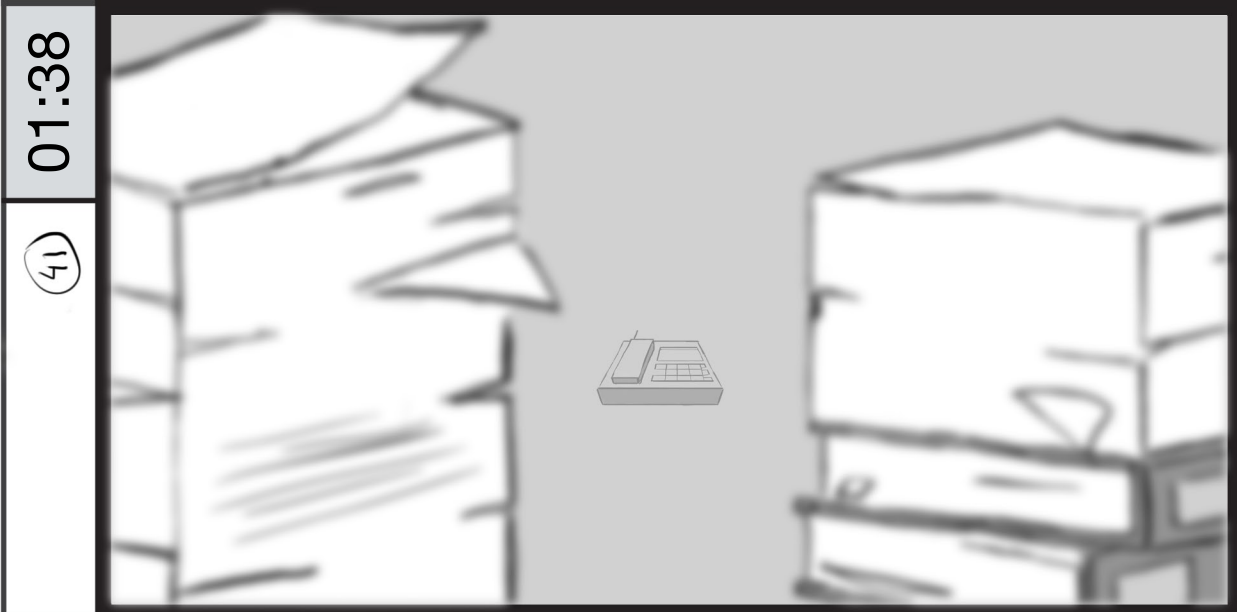


NARRATOR:
and procedures.

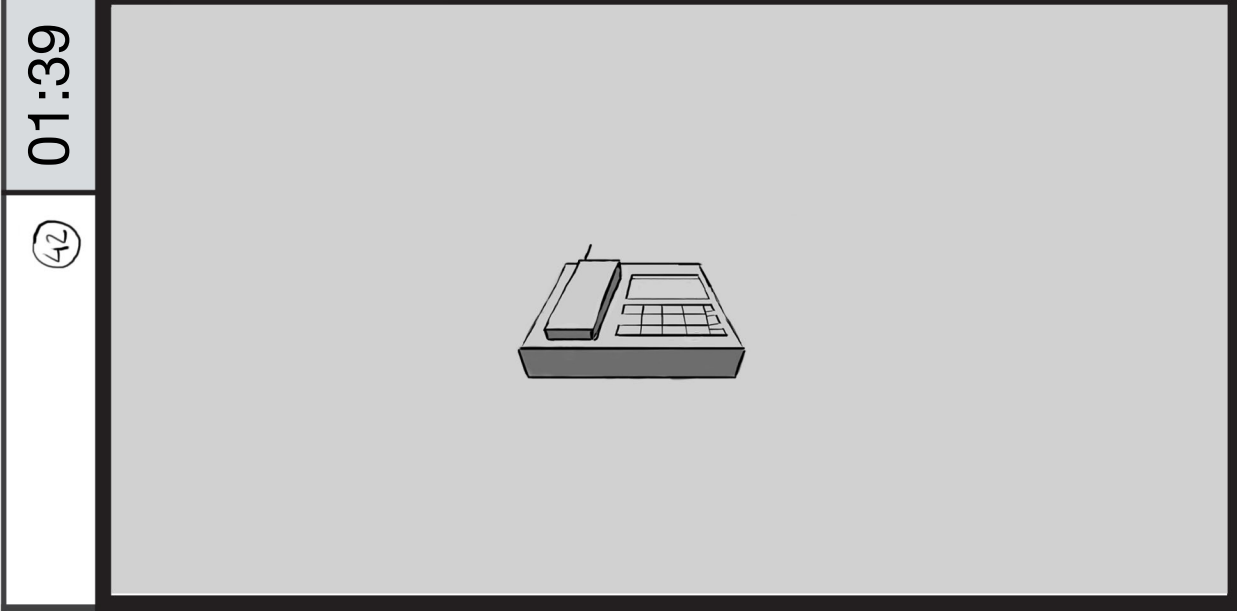
The two stacks form the companies policies and procedures.



The camera begins to zoom in between the two stacks.

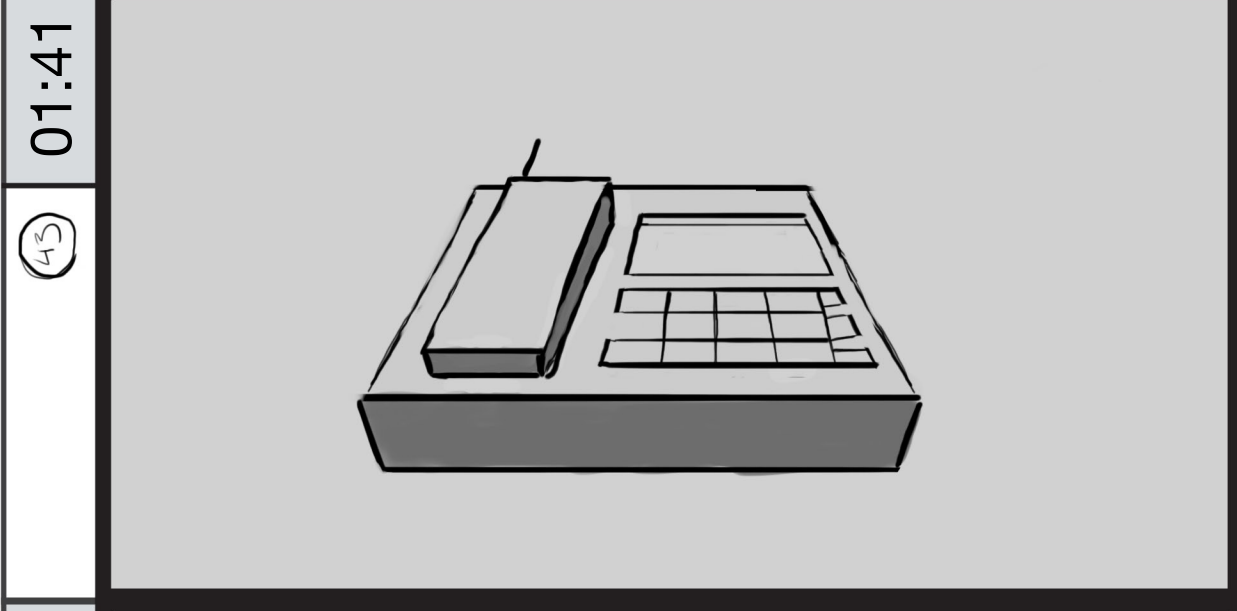


past the two stacks using depth of field revealing a phone.

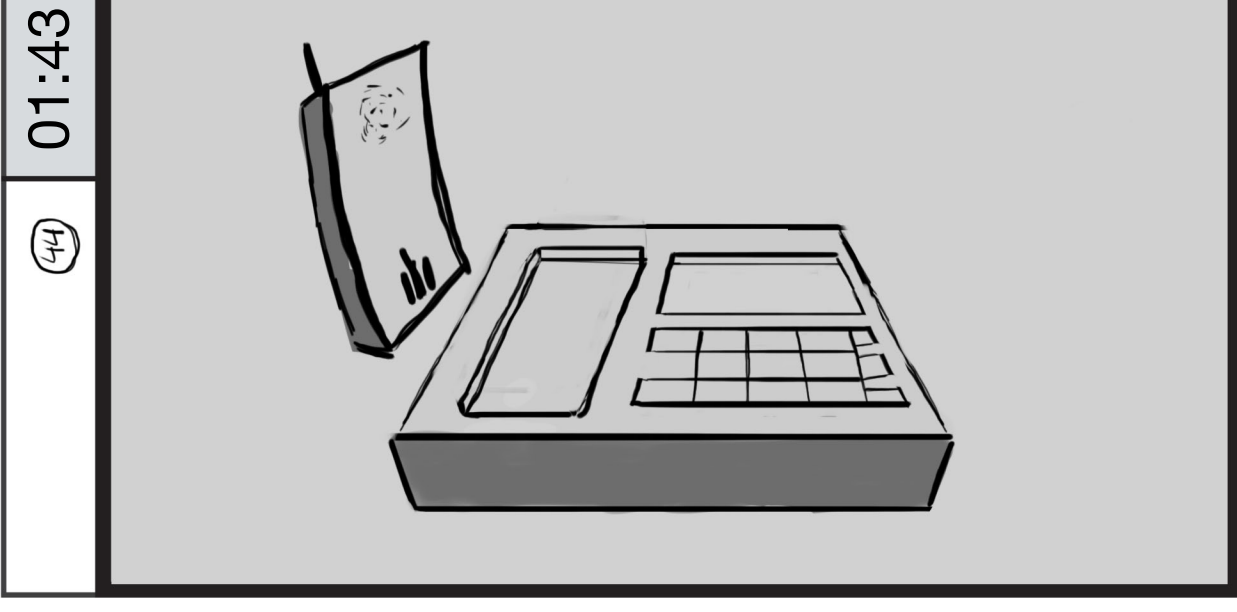


NARRATOR:
Always verify that the...

The zoom into the phone gets closer, putting the phone in focus.

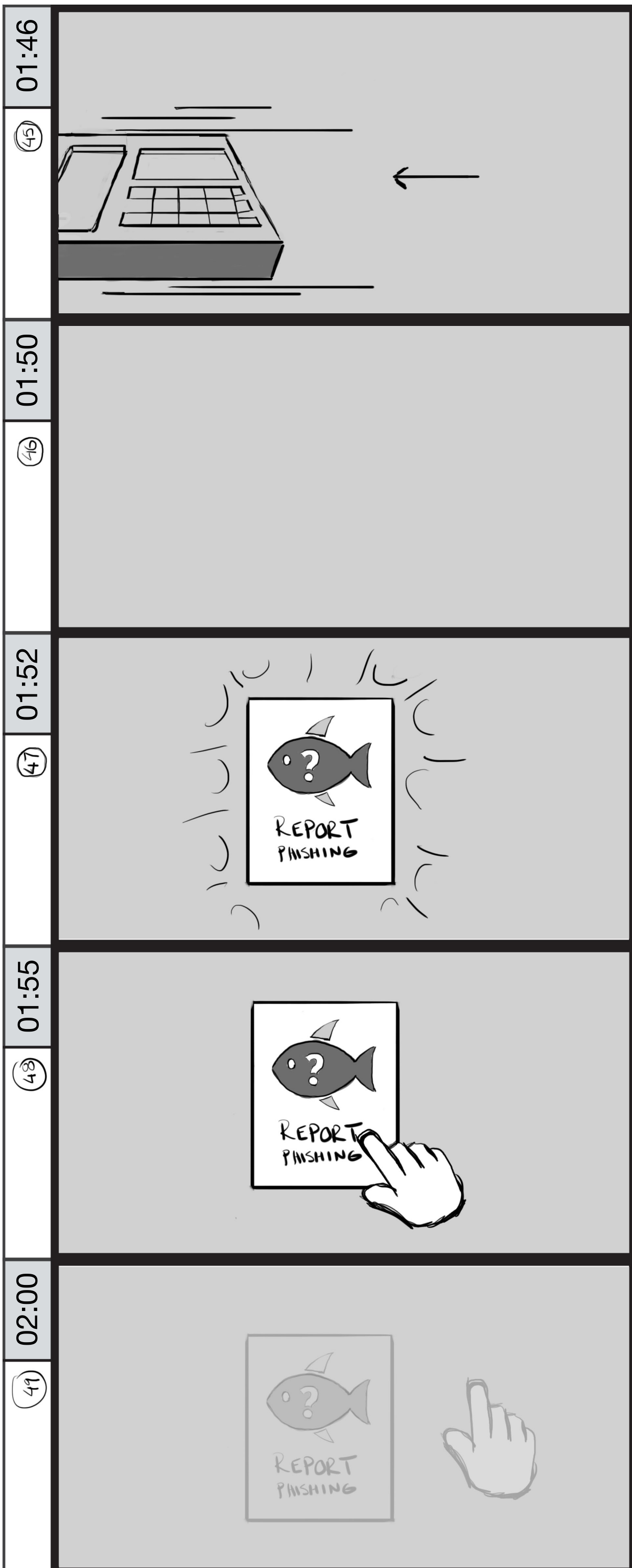


NARRATOR:
email is from the real sender with a phone call.



NARRATOR:
If you can't confirm the request...

The handset removes itself from the dock and floats in the position shown.



NARRATOR:

the transfer can wait - no exceptions.

The phone animates to the left out of the shot.

NARRATOR:

If you suspect...

NARRATOR:

you've been targeted by a BEC scam...

The Report phishing button appears on the screen.

NARRATOR:

report it immediately to your supervisor or a department authorized to handle the situation.

A pointer cursor appears out of the left bottom corner and clicks the button.

The pointer cursor and button both fade out of the shot.